



APPENDICES

APPENDIX A POPULATION

APPENDIX B MEAN HOUSEHOLD SIZE

APPENDIX C HOUSEHOLD COMPOSITION

APPENDIX D POPULATION & HOUSEHOLD
DISTRIBUTION

APPENDIX E HOUSING TENURE

APPENDIX F HOUSING TYPES

APPENDIX G SOCIAL HOUSING & AFFORDABILITY

APPENDIX H SPECIALISED HOUSING NEED

APPENDIX I VACANCY & UNFITNESS LEVELS

APPENDIX J POPULATION & HOUSINGHOLD
PROJECTIONS

APPENDIX K HOUSING COMPLETIONS

APPENDIX L BIBLIOGRAPHY

APPENDIX A Population

Table A1: Population Trends in Ballymena, Carrickfergus and Larne Districts 1971-2011

Year	Ballymena District	Carrickfergus District	Larne District	Mid & East Antrim	N.I
1971	48,998	27,044	29,897	105,939	1,536,065
1981*	54,814	28,625	29,076	112,515	1,532,196
1991	56,641	32,750	29,419	118,810	1,577,836
2001	58,610	37,659	30,832	127,101	1,685,267
2011	64,044	39,114	32,180	135,338	1,810,863
%change 1971-1981	+11.9%	+5.8%	-2.7%	+6.2%	-0.25%
%change 1981-1991	+3.3%	+14.4%	+1.2%	+5.6%	+3.0%
%change 1991-2001	+3.5%	+15.0%	+4.8%	+7.0%	+6.8%
%change 2001-2011	+9.3%	+3.9%	+4.4%	+6.5%	+7.5%
%change 1971-2011	+30.7%	+44.6%	+7.6%	+27.8%	+17.9%

Source: NISRA Census 1971, 1981, 2001 & 2011 * 1981 figures, as revised, take account of non-response

Table B1: Mean Household Size- 1981

	Total Persons in households	All Households	Average household size
Northern Ireland	1,461,153	456,348	3.20
Mid & East Antrim	110,870	35,247	3.15
Ballymena	53,848	16,758	3.21
Carrickfergus	28,295	9,205	3.07
Larne	28,727	9,284	3.09

Source: NISRA Census 1981 Housing and Household Composition Report (NI-Page 1, Ballymena-Page 3, Carrickfergus-Page 5, Larne-Page 9)

Table B2: Mean Household Size- 1991

	Total Persons in households	All Households	Average household size
Northern Ireland	1,554,538	530,369	2.93
Mid & East Antrim	117,673	41,416	2.84
Ballymena	56,064	19,137	2.93
Carrickfergus	32,450	11,870	2.73
Larne	29,159	10,409	2.80

Source: NISRA Census 1991 Summary Report Table 1 & 10

Table B3: Mean Household Size- 2001

	Total Persons in households	All Households	Average household size
Northern Ireland	1,658,808	626,718	2.65
Mid & East Antrim	125,779	49,095	2.56
Ballymena	57,936	22,060	2.63
Carrickfergus	37,245	14,785	2.52
Larne	30,598	12,250	2.50

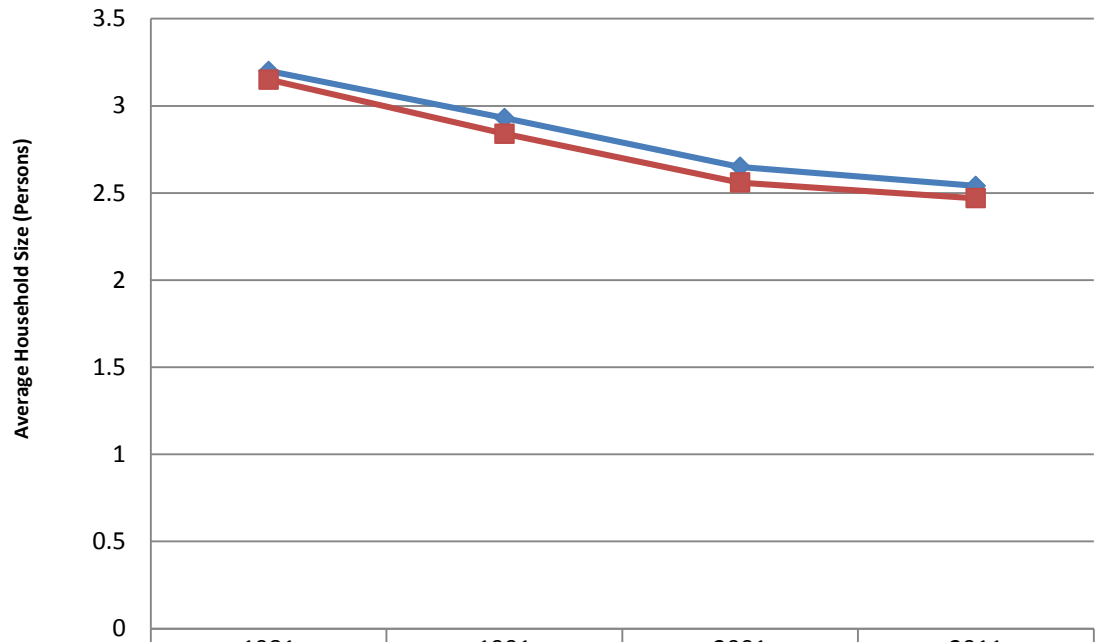
Source: NISRA Census 2001 Key Statistic Table KS01 & Household Composition: KS20 (administrative geographies)

Table B4: Mean Household Size- 2011

	Total Persons in households	All Households	Average household size
Northern Ireland	1,788,339	703,275	2.54
Mid & East Antrim	134,102	54,314	2.47
Ballymena	63,403	24,817	2.55
Carrickfergus	38,785	16,200	2.39
Larne	31,914	13,297	2.40

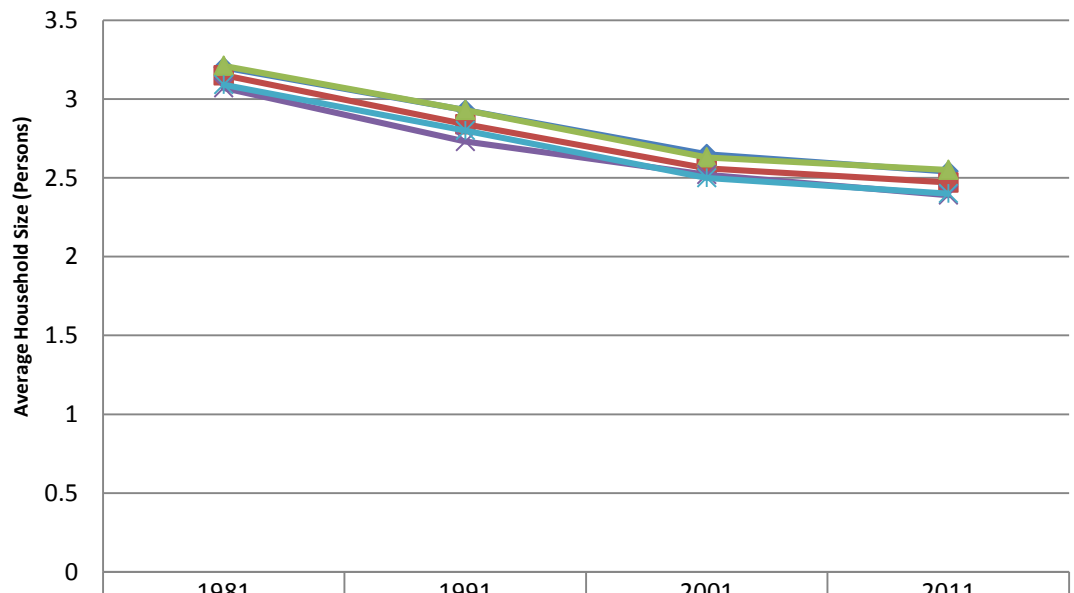
Source: NISRA Census 2011 Household Size: KS403NI (administrative geographies) & Usually Resident Population, Households and Average Household Size (administrative geographies)

Mean Household Size in Mid & East Antrim District 1981-2011



	1981	1991	2001	2011
◆ Northern Ireland	3.2	2.93	2.65	2.54
■ Mid & East Antrim	3.15	2.84	2.56	2.47

Mean Household Size in Mid & East Antrim District 1981-2011



	1981	1991	2001	2011
◆ Northern Ireland	3.2	2.93	2.65	2.54
■ Mid & East Antrim	3.15	2.84	2.56	2.47
▲ Ballymena	3.21	2.93	2.63	2.55
× Carrickfergus	3.07	2.73	2.52	2.39
* Larne	3.09	2.8	2.5	2.4

APPENDIX C Households Composition

Table C1: Household Composition- 1981

	Total Persons in households	All Households	1 person household (%)	2 person household (%)	3 to 4 persons household (%)	5 persons or more household (%)	Average household size
Northern Ireland	1,461,153	456,348	18.68%	24.90%	34.29%	22.14%	3.20
Mid & East Antrim	110,870	35,247	17.71%	25.32%	36.66%	20.32%	3.15
Ballymena	53,848	16,758	16.33%	25.64%	36.51%	21.53%	3.21
Carrickfergus	28,295	9,205	18.06%	24.90%	38.80%	18.24%	3.07
Larne	28,727	9,284	19.85%	25.15%	34.81%	20.19%	3.09

Source: NISRA Census 1981 Housing and Household Composition Report (NI-Page 1, Ballymena-Page 3, Carrickfergus-Page 5, Larne-Page 9)

Table C2: Household Composition- 2001

	Total Persons in households	All Households	1 person household (%)	2 person household (%)	3 to 4 persons household (%)	5 persons or more household (%)	Average household size
Northern Ireland	1,658,808	626,718	27.38%	28.11%	31.74%	12.77%	2.65
Mid & East Antrim	125,779	49,095	26.17%	30.96%	32.94%	9.92%	2.56
Ballymena	57,936	22,060	24.89%	30.68%	33.31%	11.12%	2.63
Carrickfergus	37,245	14,785	26.32%	31.30%	33.80%	8.58%	2.52
Larne	30,598	12,250	28.30%	31.09%	31.22%	9.39%	2.50

Source: NISRA Census 2001 [Number of Persons Living in Households UV051 \(administrative geographies\)](#)

Table C3: Household Composition- 2011

	Total Persons in households	All Households	1 person household (%)	2 person household (%)	3 to 4 person household (%)	5 person or more household (%)	Average household size
Northern Ireland	1,788,339	703,275	27.93%	30.19%	31.44%	10.46%	2.54
Mid & East Antrim	134,102	54,314	27.43%	32.51%	31.76%	8.31%	2.47
Ballymena	63,403	24,817	25.71%	31.95%	32.48%	9.86%	2.55
Carrickfergus	38,785	16,200	28.85%	32.67%	31.86%	6.62%	2.39
Larne	31,914	13,297	28.90%	33.36%	30.28%	7.47%	2.40

Source: NISRA Census 2011 Household Size: KS403NI (administrative geographies) & Usually Resident Population, Households and Average Household Size (administrative geographies)

APPENDIX D Population and Household Distribution

Table D1: Ballymena District Settlements Households and Populations 1991 & 2001

Ballymena Settlements	1991 Borough Totals				2001 Borough Totals			
	Households	%	Population	%	Households	%	Population	%
Towns								
Ballymena	10,010	52.3%	28,717	50.7%	11,323	51.3%	28,717	49.0%
Town total	10,010	52.3%	28,717	50.7%	11,323	51.3%	28,717	49.0%
Villages								
Ahoghill	775	4.0%	2,260	4.0%	1,163	5.3%	3,055	5.2%
Broughshane	695	3.6%	1,873	3.3%	953	4.3%	2,364	4.0%
Cargan	Not available				144	0.7%	411	0.7%
Clough	71	0.4%	205	0.4%	42	0.2%	105	0.2%
Cullybackey	859	4.5%	2,434	4.3%	1,020	4.6%	2,405	4.1%
Kells/Connor	505	2.6%	1,415	2.5%	684	3.1%	1,745	3.0%
Portglenone	405	2.1%	1,243	2.2%	481	2.2%	1,219	2.1%
Small Settlements								
Cromkill	48	0.3%	139	0.2%	Not available			
Dunminning	31	0.2%	88	0.2%				
Glarryford	39	0.2%	99	0.2%				
Gracehill	244	1.3%	681	1.2%				
Grange Corner	Not available				102	0.5%	282	0.5%
Martinstown	Not available				102	0.5%	285	0.5%
Villages & small settlements total	3,672	19.2%	10,437	18.4%	4,691	21.3%	11,871	20.3%
Urban total	13,682	71.5%	39,154	69.1%	16,014	72.6%	40,588	69.3%
Rural remainder total	5,455	28.5%	17,487	30.9%	6,046	27.4%	18,022	30.7%
Ballymena Borough Total	19,137		56,641		22,060		58,610	

Source: NISRA 1991 NI Census Town and Villages Booklets & 1991 Census Summary Report Table 3, 2001 Key Statistics for Settlements Tables & Tables: KS01, STU500 & KS21

Table D2: Carrickfergus District Settlements Households and Populations 1991 & 2001

Carrickfergus Settlements	1991 Borough Totals				2001 Borough Totals			
	Households	%	Population	%	Households	%	Population	%
Towns								
Carrickfergus	8,206	69.1%	22,885	69.9%	10,592	71.6%	27,201	69.5%
Greenisland Urban Area	1,862	15.7%	4,967	15.2%	2,043	13.8%	5,050	12.9%
Whitehead	1,429	12.0%	3,761	11.5%	1,534	10.4%	3,702	9.5%
Towns total	11,497	96.9%	31,613	96.5%	14,169	95.8%	35,953	91.9%
Villages								
None	0	0.0%	0	0.0%	0	0.0%	0	0.0%
Small Settlements								
Knocknagulliagh	Not available				Forms part of aggregate figure below			
Tropperslane	Not available				Forms part of aggregate figure below			
Aggregate Figure for Small Settlements	Not available				66	0.4%	141	0.4%
Small settlements total	Not available				66	0.4%	141	0.4%
Urban total	11,497	96.9%	31,613	96.5%	14,235	96.3%	36,094	92.3%
Rural remainder total	373	3.1%	1,137	3.5%	550	3.7%	3,020	7.7%
Carrickfergus Borough Total	11,870		32,750		14,785		39,114	

Source: NISRA 1991 NI Census Town and Villages Booklets & 1991 Census Summary Report Table 3, 2001 Key Statistics for Settlements Tables & Tables: KS01, STU500 & KS21

Table D3: Larne District Settlements Households and Populations 1991 & 2001

Larne Settlements	1991 Borough Totals				2001 Borough Totals			
	Households	%	Population	%	Households	%	Population	%
Towns								
Larne (inc Millbrook)	6,620	63.6%	18,067	61.4%	7,644	62.4%	18,228	59.1%
Town total	6,620	63.6%	18,067	61.4%	7,644	62.4%	18,228	59.1%
Villages								
Ballycarry	346	3.3%	1,010	3.4%	370	3.0%	981	3.2%
Ballygalley	182	1.7%	496	1.7%	293	2.4%	714	2.3%
Ballystrudder	185	1.8%	489	1.7%	306	2.5%	781	2.5%
Camlough	454	4.4%	1,493	5.1%	497	4.1%	1,444	4.7%
Glenarm	211	2.0%	603	2.0%	243	2.0%	582	1.9%
Glynn	147	1.4%	384	1.3%	259	2.1%	641	2.1%
Small Settlements								
Browns Bay	Not available				Forms part of aggregate figure below			
Carnageer	Not available				Forms part of aggregate figure below			
Carnalbanagh	Not available				Forms part of aggregate figure below			
Carncastle	22	0.2%	63	0.2%	27	0.2%	66	0.2%
Crosshill	Not available				Forms part of aggregate figure below			
Deerpark	Not available				Forms part of aggregate figure below			
Drumcrow	Not available				Forms part of aggregate figure below			
Ferris Bay	Not available				Forms part of aggregate figure below			
Feystown	Not available				Forms part of aggregate figure below			
Garron Point	Not available				Forms part of aggregate figure below			
Glencoe	30	0.3%	91	0.3%	42	0.3%	87	0.3%
Kilwaughter	Not available				Forms part of aggregate figure below			
Magheramorne	Not available				30	0.2%	75	0.2%
Mill Bay	Not available				42	0.3%	93	0.3%
Mounthill	Not available				27	0.2%	69	0.2%
Mullaghboy	Not available				123	1.0%	294	1.0%
Raloo	25	0.2%	74	0.3%	Forms part of aggregate figure below			
Straidkilly	Not available				Forms part of aggregate figure below			
Aggregate Figure for small settlements	Not available				399	3.3%	930	3.0%
Villages & small settlements total	1,602	15.4%	4,703	16.0%	2,367	19.3%	6,073	19.7%
Urban total	8,222	79.0%	22,770	77.4%	10,011	81.7%	24,301	78.8%
Rural remainder total	2,187	21.0%	6,649	22.6%	2,239	18.3%	6,531	21.2%
Larne Borough Total	10,409		29,419		12,250		30,832	

Source: NISRA 1991 NI Census Town and Villages Booklets & 1991 Census Summary Report Table 3, 2001 Key Statistics for Settlements Tables & Tables: KS01, STU500 & KS21

Table D4: Population and Household Distribution- 2001

	Ballymena District		Larne District		Carrickfergus District		Mid & East Antrim	
	Population	Households	Population	Households	Population	Households	Population	Households
Main Towns	28,717	11,323	18,228	7,644	27,201	10,592	74,147	29,559
	49.0%	51.3%	59.1%	62.4%	69.5%	71.6%	57.7%	60.2%
Local Towns	n/a	n/a	n/a	n/a	8,752	3,577	8,752	3,577
					22.4%	24.2%	6.8%	7.3%
Total Towns	28,717	11,323	18,228	7,644	35,953	14,169	82,899	33,136
	49.0%	51.3%	59.1%	62.4%	91.9%	95.8%	64.5%	67.5%
Villages	11,304	4,487	5,143	1,968	n/a	n/a	16,447	6,455
	19.3%	20.3%	16.7%	16.1%			12.8%	13.1%
Small Settlements	567	204	930	399	141	66	1,638	669
	1%	1%	3%	3.3%	0.4%	0.4%	1.3%	1.4%
Total Settlements	40,588	16,014	24,301	10,011	36,094	14,235	100,983	40,260
	69.3%	72.6%	78.8%	81.7%	92.3%	96.3%	78.6%	82%
Countryside	18,022	6,046	6,531	2,239	3,020	550	27,573	8,835
	30.7%	27.4%	21.2%	18.3%	7.7%	3.7%	21.4%	18%
District Total	58,610	22,060	30,832	12,250	39,114	14,785	128,556	49,095

Source: NISRA Census 2001 Key Statistics for Settlements Tables & Tables: KS01, STU500 & KS21

APPENDIX E Housing Tenure

Table E1: Housing Tenure- 2001

	Total Dwellings	Owner Occupied	NIHE	H.A	Private Rented & Other	Vacant
Northern Ireland	647,530	432,270 66.8%	115,980 17.9%	17,930 2.8%	49,410 7.6%	31,940 4.9%
Mid & East Antrim	50,660	35,250 69.6%	8,160 16.1%	1,080 2.1%	3,180 6.3%	2,990 5.9%
Ballymena	22,770	15,120 66.4%	3,570 15.7%	390 1.7%	1,650 7.3%	2,040 9.0%
Carrickfergus	15,040	11,090 73.8%	2,510 16.7%	350 2.3%	680 4.5%	410 2.7%
Larne	12,850	9,040 70.3%	2,080 16.2%	340 2.6%	850 6.6%	540 4.2%

Source: NINIS Dwelling Tenure (administrative geographies) taken from Housing Condition Survey 2001
H.A= Housing Association

Table E2: Housing Tenure- 2006

	Total Dwellings	Owner Occupied	NIHE	H.A	Private Rented & Other	Vacant
Northern Ireland	705,000	468,860 66.5%	93,440 13.3%	21,530 3.1%	80,870 11.5%	40,300 5.7%
Mid & East Antrim	52,730	37,480 71.1%	6,330 12.0%	1,240 2.4%	4,710 8.9%	2,970 5.6%
Ballymena	22,970	16,390 71.4%	2,920 12.7%	510 2.2%	2,010 8.8%	1,140 5.0%
Carrickfergus	16,620	11,980 72.1%	1,920 11.5%	490 3.0%	1,280 7.7%	950 5.7%
Larne	13,140	9,110 69.3%	1,490 11.3%	240 1.8%	1,420 10.8%	880 6.7%

Source: NINIS Dwelling Tenure (administrative geographies) taken from Housing Condition Survey 2006
H.A= Housing Association

Table E3: Housing Tenure- 2011

	Total Dwellings	Owner Occupied	Social Housing	Private Rented & Other	Vacant
Northern Ireland	760,000	469,070 61.7%	125,440 16.5%	110,760 14.6%	54,730 7.2%
Mid & East Antrim	62,480	40,320 64.5%	9,480 15.2%	7,940 12.7%	4,740 7.6%

Source: NINIS Dwelling Tenure (administrative geographies) taken from Housing Condition Survey 2011

Table E4: Household Tenure in Mid & East Antrim- 1991

	All households	Owner occupied	Social rented	Private rented
Northern Ireland	530,369	330,198 62.3%	164,222 31.0%	30,883 5.8%
Mid & East Antrim	41,416	27,355 66.0%	11,855 28.6%	1,852 4.5%
Ballymena	19,137	12,617 65.9%	5,444 28.4%	879 4.6%
Carrickfergus	11,870	7,656 64.5%	3,688 31.1%	459 3.9%
Larne	10,409	7,082 68.0%	2,723 26.2%	514 4.9%

Source: NISRA Census 1991 Housing & Household Composition Report Table 13

Table E5: Household Tenure in Mid & East Antrim- 2001

	All households	Owner occupied	Social rented	Private rented
Northern Ireland	626,718	436,217 69.6%	132,931 21.2%	57,570 9.2%
Mid & East Antrim	49,094	36,509 74.4%	9,083 18.5%	3,502 7.1%
Ballymena	22,059	16,364 74.2%	3,988 18.1%	1,707 7.7%
Carrickfergus	14,785	11,121 75.2%	2,833 19.2%	831 5.6%
Larne	12,250	9,024 73.7%	2,262 18.5%	964 7.9%

Source: NISRA Census 2001 Tenure (Households): UV089 (administrative geographies)

Table E6: Household Tenure in Mid & East Antrim- 2011

	All households	Owner occupied	Social rented	Private rented
Northern Ireland	703,275	474,751 67.5%	104,885 14.9%	106,016 15.1%
Mid & East Antrim	54,314	39,232 72.2%	6,416 11.8%	7,339 13.5%
Ballymena	24,817	17,844 71.9%	2,778 11.2%	3,489 14.1%
Carrickfergus	16,200	11,747 72.5%	2,214 13.7%	1,923 11.9%
Larne	13,297	9,641 72.5%	1,424 10.7%	1,927 14.5%

Source: NISRA Census 2011 Households (administrative geographies) & Tenure – Households: QS405NI (administrative geographies)

Table E7: Tenure of households in Ballymena SOAs-2011

Ballymena District	Usual Resident Population	All households	Owner occupied	Owner occupied %	Social rented	Social rented %	Private rented	Private rented %
Academy	2,099	836	696	83.3%	26	3.1%	93	11.1%
Ahoghill 1	1,453	599	413	68.9%	116	19.4%	55	9.2%
Ahoghill 2	2,435	891	740	83.1%	18	2.0%	115	12.9%
Ardeevin	3,503	1,389	1092	78.6%	21	1.5%	250	18.0%
Ballee	1,926	859	353	41.1%	404	47.0%	66	7.7%
Ballykeel	1,739	685	347	50.7%	266	38.8%	54	7.9%
Ballyloughan	2,588	944	837	88.7%	5	0.5%	84	8.9%
Broughshane 1	1,596	689	473	68.7%	76	11.0%	113	16.4%
Broughshane 2	1,767	723	526	72.8%	77	10.7%	95	13.1%
Castle Demesne	2,126	1,041	427	41.0%	202	19.4%	374	35.9%
Craigyarwarren	2,590	929	797	85.8%	22	2.4%	87	9.4%
Cullybackey	2,805	1,180	779	66.0%	233	19.7%	137	11.6%
Dunclug	2,363	955	410	42.9%	298	31.2%	222	23.2%
Dunminning	2,610	890	777	87.3%	22	2.5%	56	6.3%
Fair Green	1,784	741	454	61.3%	124	16.7%	143	19.3%
Galgorm 1	1,603	626	505	80.7%	30	4.8%	78	12.5%
Galgorm 2	1,674	607	548	90.3%	13	2.1%	37	6.1%
Glenravel	3,451	1,174	948	80.7%	50	4.3%	147	12.5%
Glenwhirry	2,981	1,019	897	88.0%	15	1.5%	81	7.9%
Grange	3,461	1,148	996	86.8%	28	2.4%	83	7.2%
Harryville	1,885	873	540	61.9%	92	10.5%	213	24.4%
Kells 1	1,904	732	515	70.4%	98	13.4%	103	14.1%
Kells 2	1,460	543	462	85.1%	16	2.9%	40	7.4%
Moat	1,746	826	374	45.3%	307	37.2%	117	14.2%
Park	2,139	891	595	66.8%	19	2.1%	253	28.4%
Portglenone 1	1,555	559	438	78.4%	28	5.0%	68	12.2%
Portglenone 2	1,581	597	415	69.5%	82	13.7%	75	12.6%
Slemish	2,509	881	743	84.3%	8	0.9%	97	11.0%
Summerfield	2,711	990	747	75.5%	82	8.3%	153	15.5%

Source for Population & Households: NISRA Census 2011 Households (statistical geographies)

Source for Tenures: NISRA Census 2011 Tenure - Households: QS405NI (statistical geographies)

Table E8: Tenure of households in Carrickfergus SOAs-2011

Carrickfergus District	Usual Resident Population	All households	Owner occupied	Owner occupied %	Social rented	Social rented %	Private rented	Private rented %
Blackhead	2,059	890	622	69.9%	128	14.4%	127	14.3%
Bluefield 1	1,358	522	476	91.2%	2	0.4%	31	5.9%
Bluefield 2	1,604	541	506	93.5%	5	0.9%	25	4.6%
Boneybefore	1,663	726	617	85.0%	46	6.3%	54	7.4%
Burleigh Hill 1	1,709	645	595	92.2%	0	0.0%	40	6.2%
Burleigh Hill 2	1,358	515	463	89.9%	32	6.2%	14	2.7%
Clipperstown	2,171	908	507	55.8%	224	24.7%	155	17.1%
Eden 1	2,231	762	673	88.3%	15	2.0%	61	8.0%
Eden 2	2,566	920	760	82.6%	72	7.8%	80	8.7%
Gortalee	1,493	733	364	49.7%	256	34.9%	86	11.7%
Greenisland	2,619	1,083	820	75.7%	97	9.0%	149	13.8%
Killycrot	2,620	1,423	699	49.1%	298	20.9%	383	26.9%
Knockagh	2,489	945	833	88.1%	33	3.5%	67	7.1%
Love Lane	1,417	655	306	46.7%	268	40.9%	66	10.1%
Milebush	1,552	626	491	78.4%	71	11.3%	53	8.5%
Northland	1,407	614	336	54.7%	166	27.0%	100	16.3%
Sunnylands	1,530	764	402	52.6%	232	30.4%	103	13.5%
Victoria	2,630	1,083	760	70.2%	165	15.2%	139	12.8%
Whitehead	2,159	917	708	77.2%	74	8.1%	115	12.5%
Woodburn	2,479	928	809	87.2%	30	3.2%	75	8.1%

Source for Population & Households: NISRA Census 2011 Households (statistical geographies)

Source for Tenures: NISRA Census 2011 Tenure - Households: QS405NI (statistical geographies)

Table E9: Tenure of households in Larne SOAs- 2011

Larne District	Usual Resident Population	All households	Owner occupied	Owner occupied %	Social rented	Social rented %	Private rented	Private rented %
Antiville	1,483	707	388	54.9%	163	23.1%	135	19.1%
Ballycarry	2,582	996	852	85.5%	28	2.8%	100	10.0%
Ballyloran	1,096	507	273	53.8%	155	30.6%	59	11.6%
Blackcave	1,635	692	414	59.8%	179	25.9%	79	11.4%
Carncastle	2,875	1,127	1003	89.0%	18	1.6%	89	7.9%
Carnlough	2,041	754	517	68.6%	79	10.5%	139	18.4%
Central	1,817	919	448	48.7%	233	25.4%	216	23.5%
Craigy Hill	1,455	698	403	57.7%	206	29.5%	60	8.6%
Gardenmore	1,916	838	627	74.8%	100	11.9%	96	11.5%
Glenarm	1,851	688	516	75.0%	41	6.0%	103	15.0%
Glynn	2,027	776	666	85.8%	32	4.1%	57	7.3%
Harbour	1,811	758	514	67.8%	54	7.1%	169	22.3%
Island Magee	2,568	1,031	842	81.7%	53	5.1%	118	11.4%
Kilwaughter 1	3,660	1,366	1076	78.8%	12	0.9%	273	20.0%
Kilwaughter 2	1,770	679	576	84.8%	24	3.5%	62	9.1%
Town Parks	1,593	761	526	69.1%	47	6.2%	172	22.6%

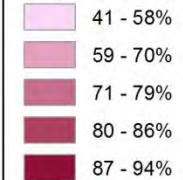
Source for Population & Households: NISRA Census 2011 Households (statistical geographies)

Source for Tenures: NISRA Census 2011 Tenure - Households: QS405NI (statistical geographies)

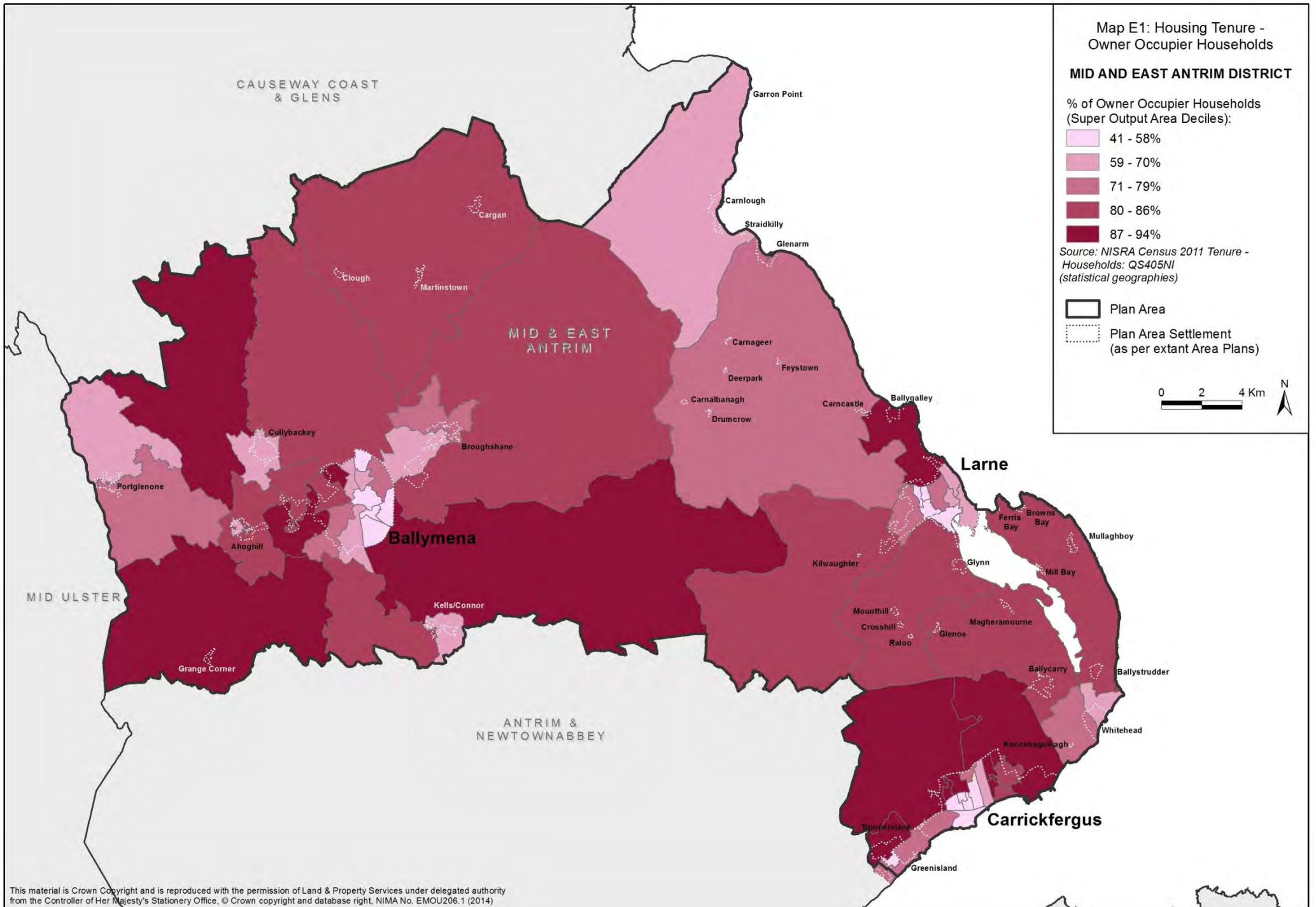
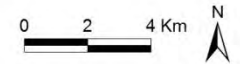
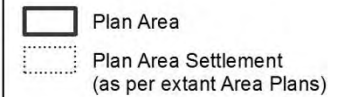
Map E1: Housing Tenure -
Owner Occupier Households

MID AND EAST ANTRIM DISTRICT

% of Owner Occupier Households
(Super Output Area Deciles):



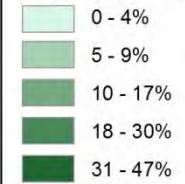
Source: NISRA Census 2011 Tenure -
Households: QS405NI
(statistical geographies)



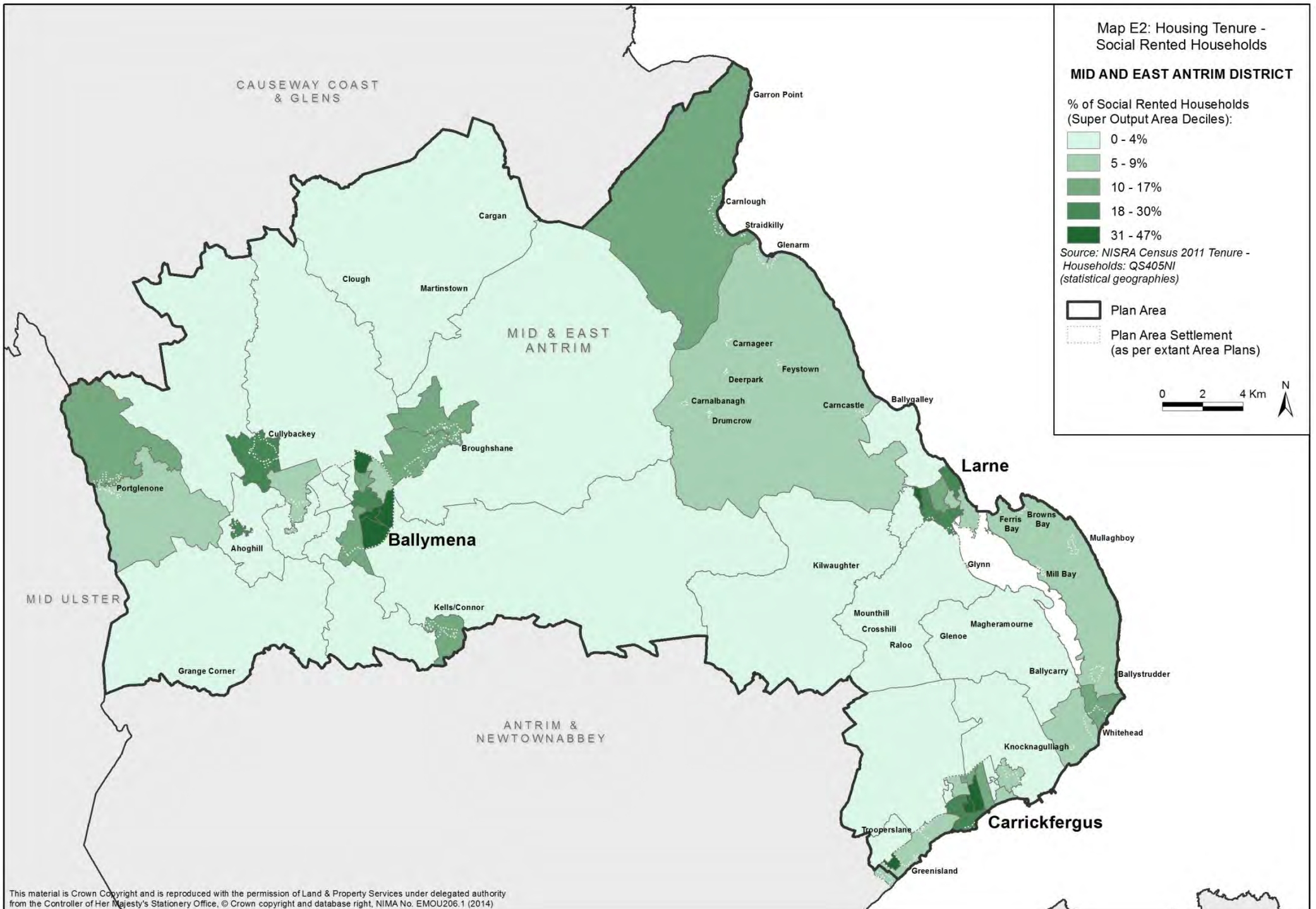
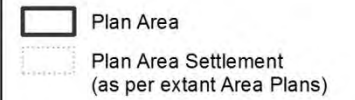
Map E2: Housing Tenure -
Social Rented Households

MID AND EAST ANTRIM DISTRICT

% of Social Rented Households
(Super Output Area Deciles):



Source: NISRA Census 2011 Tenure -
Households: QS405NI
(statistical geographies)



APPENDIX F Housing Types

Table F1: Household by Type- 2001

	Total Households	Detached	Semi-Detached	Terraced	Flats	Other*
Northern Ireland	626,718	230,406 36.8%	174,781 27.9%	169,433 27.0%	50,278 8%	1,820 0.3%
Mid & East Antrim	49,092	20,069 40.9%	12,231 24.9%	12,860 26.2%	3,844 7.8%	88 0.2%
Ballymena	22,057	10,172 46.1%	5,370 24.3%	5,048 22.9%	1,415 6.4%	52 0.2%
Carrickfergus	14,785	5,366 36.3%	4,058 27.4%	3,994 27.0%	1,315 9.1%	16 0.1%
Larne	12,250	4,531 37.0%	2,803 22.9%	3,818 31.2%	1,078 8.8%	20 0.2%

Source: NISRA Census 2001 Accommodation Type (Households): UV056 (administrative geographies)

Notes: (1) In general, a household's accommodation is defined as an unshared dwelling if all the rooms are behind a door that only that household can use. (2) Other* includes caravan, mobile or temporary structure or shared house

Table F2: Household by Type- 2011

	Total Households	Detached	Semi-Detached	Terraced	Flats	Other*
Northern Ireland	703,275	264,307 37.6%	200,577 28.5%	174,896 24.9%	62,386 8.9%	1,109 0.2%
Mid & East Antrim	54,314	22,773 41.9%	13,760 25.3%	12,982 23.9%	4,732 8.7%	67 0.1%
Ballymena	24,817	11,963 48.2%	6,092 24.5%	4,993 20.1%	1,733 7.0%	36 0.1%
Carrickfergus	16,200	5,807 35.8%	4,246 26.2%	4,184 25.8%	1,956 12.1%	7 0.0%
Larne	13,297	5,003 37.6%	3,422 25.7%	3,805 28.6%	1,043 7.8%	24 0.2%

Source: NISRA Census 2011 Accommodation Type - Households: QS402NI (administrative geographies)

Notes: (1) In general, a household's accommodation is defined as an unshared dwelling if all the rooms are behind a door that only that household can use. (2) Other* includes caravan, mobile or temporary structure or shared house

Table F3: Domestic Properties by type in Mid & East Antrim- 2008

	Total Properties	Detached properties	Semi-Detached properties	Terraced properties	Apartments
Northern Ireland	728,840	260,015 35.7%	180,224 24.7%	218,350 29.96%	58,110 8%
Mid & East Antrim	55,085	22,070 40.0%	12,004 21.8%	16,495 29.9%	4,516 8.2%
Ballymena	24,876	11,372 45.7%	5,281 21.2%	6,672 26.8%	1,551 6.2%
Carrickfergus	16,326	5,653 34.6%	3,820 23.4%	4,988 30.5%	1,865 11.4%
Larne	13,883	5,045 36.3%	2,903 20.9%	4,835 34.8%	1,100 7.9%

Source: NISRA Domestic Properties (administrative geographies) from LPS

Table F4: Domestic Properties by type in Mid & East Antrim- 2013

	Total Properties	Detached properties	Semi-Detached properties	Terraced properties	Apartments
Northern Ireland	764,744	272,608 35.6%	187,809 24.6%	223,695 29.2%	80,632 10.5%
Mid & East Antrim	57,908	23,073 39.8%	12,522 21.6%	16,744 28.9%	5,569 9.6%
Ballymena	26,357	12,096 45.9%	5,470 20.7%	6,784 25.7%	2,007 7.6%
Carrickfergus	17,031	5,787 34%	3,934 23.1%	5,044 29.6%	2,266 13.3%
Larne	14,520	5,190 35.7%	3,118 21.5%	4,916 33.9%	1,296 8.9%

Source: NISRA Domestic Properties (administrative geographies) from LPS

APPENDIX G Social Housing & Affordability

Table G1: Average House Price by Region & NI 2009-mid 2014

Region	Ave House Price 2009 (£)	Ave House Price 2010 (£)	Ave House Price 2011 (£)	Ave House Price 2012 (£)	Ave House Price 2013 (£)	Ave House Price Q1&Q2 2014 (£)
Northern Ireland	160,855	158,421	139,800	138,147	131,204	137,984
Antrim/Ballymena	166,027	149,254	124,420	122,169	112,548	106,839
East Antrim	136,111	139,501	130,904	116,400	109,659	121,666

Source: Ballymena, Carrickfergus & Larne Annual HNA 2013 & University of Ulster, NI Quarterly House Price Index

Table H1: Levels of Homelessness 2009-2014

		2009/10	2010/11	2011/12	2012/13	2013/14
Ballymena	Presented	763	904	806	750	695
	Awarded Full Duty Status*	490	498	359	414	385
Carrickfergus	Presented	450	500	466	463	456
	Awarded Full Duty Status*	214	260	193	251	216
Larne	Presented	236	291	293	252	266
	Awarded Full Duty Status*	101	128	120	114	123
Mid & East Antrim Total	Presented	1,449	1,695	1,565	1,465	1,417
	Awarded Full Duty Status*	805	886	672	779	724

Source: Ballymena, Carrickfergus & Larne District Housing Plans 2014-2015 *Statutory Homeless

APPENDIX I Vacancy & Unfitness Levels

Table I1: Land & Property Service Housing Stock Vacancy rates – 2011 & 2012

	2011			2012		
	Total Dwelling Stock	Occupied	Vacant	Total Dwelling Stock	Occupied	Vacant
Northern Ireland	754,831	708,073 93.8%	46,758 6.2%	756,317	719,390 95.1%	36,927 4.9%
Mid & East Antrim	57,130	54,426 95.3%	2,704 4.7%	57,186	55,166 96.5%	2,020 3.5%
Ballymena	25,891	24,695 95.4%	1,196 4.6%	25,929	25,072 96.7%	857 3.3%
Carrickfergus	16,877	16,224 96.1%	653 3.9%	16,883	16,347 96.8%	536 3.2%
Larne	14,362	13,507 94.0%	855 6.0%	14,374	13,747 95.6%	627 4.4%

Source: NISRA Housing Stock (administrative geographies)

Note: Figures are from LPS for all properties which are, in practice domestic but with some having pending valuations

Table I2: Decent Homes, Unfitness and Fuel Poor Households in Mid & East Antrim- 2011

	Number of Dwellings	% of Non Decent Homes	% of Unfitness failures	Number of Households	Percent of Fuel Poor Households
Ballymena	28,648	12-13%	6%	20,270	47 - 51%
Carrickfergus	18,644	5-8%	5%	13,234	43 - 46%
Larne	15,891	14%	7%	10,859	52 - 56%

Source: [2011 NIHE House Condition Survey – District Council figures for key measures](#)

APPENDIX J Population & Household Projections

Table J1: Number of Households and % change 2001 & 2011

	Total Households 2001	Total Households 2011	% increase
Northern Ireland	626,718	703,275	12.2%
Mid & East Antrim	49,092	54,314	10.6%
Ballymena	22,057	24,817	12.5%
Carrickfergus	14,785	16,200	9.6%
Larne	12,250	13,297	8.5%

Source: NISRA Census 2001 Key Statistic Table KS01 & Household Composition: KS20 (administrative geographies) & Census 2011 Household Size: KS403NI (administrative geographies)

Table J2: Household Projections 2008-2030 detailing % increase year on year

	Northern Ireland	Mid & East Antrim	Ballymena	Carrickfergus	Larne
2008	688,700	54,100	24,500	16,500	13,100
	+1.26%	+1.29%	+1.22%	+1.21%	+1.53%
2009	697,400	54,800	24,800	16,700	13,300
	+1.29%	+1.09%	+1.21%	+1.20%	+0.75%
2010	706,400	55,400	25,100	16,900	13,400
	+1.25%	+1.08%	+1.20%	+1.18%	+0.75%
2011	715,200	56,000	25,400	17,100	13,500
	+1.23%	+1.07%	+1.18%	+1.17%	+0.74%
2012	724,000	56,600	25,700	17,300	13,600
	+1.22%	+1.24%	+1.17%	+1.16%	+1.47%
2013	732,800	57,300	26,000	17,500	13,800
	+1.15%	+0.87%	+1.15%	+1.14%	0.00%
2014	741,200	57,800	26,300	17,700	13,800
	+1.08%	+0.69%	+0.76%	+0.56%	+0.72%
2015	749,200	58,200	26,500	17,800	13,900
	+1.03%	+1.03%	+1.13%	+1.12%	+0.72%
2016	756,900	58,800	26,800	18,000	14,000
	+1.00%	+0.85%	+0.75%	+1.11%	+0.71%
2017	764,500	59,300	27,000	18,200	14,100
	+0.98%	+0.84%	+1.11%	+0.55%	+0.71%
2018	772,000	59,800	27,300	18,300	14,200
	+0.95%	+0.84%	+0.73%	+1.09%	+0.70%
2019	779,300	60,300	27,500	18,500	14,300
	+0.96%	+0.66%	+1.09%	+0.54%	0.00%
2020	786,800	60,700	27,800	18,600	14,300
	+0.97%	+0.82%	+0.72%	+1.08%	+0.70%
2021	794,400	61,200	28,000	18,800	14,400
	+0.99%	+0.82%	+1.07%	+0.53%	+0.69%
2022	802,300	61,700	28,300	18,900	14,500
	+1.01%	+0.97%	1.06%	+1.06%	+0.69%
2023	810,400	62,300	28,600	19,100	14,600
	+1.01%	+0.97%	+1.06%	+1.06%	+0.69%
2024*	818,582	62,906	28,903	19,302	14,701
	+0.97%	+0.97%	+1.06%	+1.06%	+0.69%
2025*	826,500	63,518	29,210	19,506	14,802
	+0.92%	+0.97%	+1.06%	+1.06%	+0.69%
2026*	834,100	64,135	29,519	19,713	14,904
	+0.89%	+0.97%	+1.06%	+1.06%	+0.69%
2027*	841,500	64,759	29,832	19,921	15,007
	+0.82%	+0.97%	+1.06%	+1.06%	+0.69%
2028*	848,400	65,389	30,148	20,132	15,110
	+0.80%	+0.97%	+1.06%	+1.06%	+0.69%
2029*	855,200	66,025	30,468	20,345	15,215
	+0.75%	+0.97%	+1.06%	+1.06%	+0.69%
2030*	861,600	66,667	30,791	20,561	15,320

Source: NISRA NI 2008 based from NI08_House_Projs.xls released in 2010 & remainder from Sub_NI08_House_Projs.xls

*The projections for 2024 and 2030 were calculated using the percentage increase of 2022-2023 (Mid & East Antrim=0.97%, Ballymena & Carrickfergus=1.06%, Larne=0.69%)

Amended with 2012-based Table J2: Household Projections 2008-2030 detailing % increase year on year

	Northern Ireland	Mid & East Antrim	Ballymena	Carrickfergus	Larne
2012	708,603	54,680	25,044	16,254	13,382
	+0.58%	+0.40%	+0.54%	+0.19%	+0.37%
2013	712,712	54,897	25,180	16,285	13,432
	+0.64%	+0.45%	+0.63%	+0.21%	+0.41%
2014	717,287	55,145	25,338	16,320	13,487
	+0.64%	+0.46%	+0.59%	+0.20%	+0.50%
2015	721,860	55,396	25,488	16,353	13,555
	+0.60%	+0.39%	+0.56%	+0.14%	+0.37%
2016	726,169	55,613	25,632	16,376	13,605
	+0.57%	+0.38%	+0.56%	+0.17%	+0.29%
2017	730,299	55,825	25,776	16,404	13,645
	+0.59%	+0.41%	+0.61%	+0.13%	+0.39%
2018	734,608	56,055	25,932	16,425	13,698
	+0.59%	+0.41%	+0.57%	+0.21%	+0.34%
2019	738,964	56,285	26,081	16,460	13,744
	+0.61%	+0.41%	+0.59%	+0.23%	+0.27%
2020	743,460	56,513	26,234	16,498	13,781
	+0.61%	+0.44%	+0.61%	+0.18%	+0.42%
2021	748,002	56,760	26,394	16,527	13,839
	+0.65%	+0.48%	+0.63%	+0.27%	+0.43%
2022	752,856	57,031	26,560	16,572	13,899
	+0.68%	+0.46%	+0.63%	+0.29%	+0.35%
2023	757,946	57,294	26,727	16,620	13,947
	+0.70%	+0.45%	+0.67%	+0.16%	+0.37%
2024	763,271	57,551	26,906	16,646	13,999
	+0.66%	+0.36%	+0.54%	+0.15%	+0.25%
2025	768,279	57,757	27,052	16,671	14,034
	+0.61%	+0.33%	+0.56%	+0.04%	+0.24%
2026	772,931	57,948	27,203	16,678	14,067
	+0.60%	+0.35%	+0.61%	+0.04%	+0.22%
2027	777,590	58,153	27,370	16,685	14,098
	+0.58%	+0.29%			
2028	782,099	58,324			
	+0.51%	+0.21%			
2029	786,125	58,448			
	+0.47%	+0.19%			
2030	789,858	58,557			

Source: NISRA Household Projections (2012-based) published on 26 March 2015 based from HHP12_NI & HHP12_LGD2014 & HHP12_LGD1992

Table J3: Population Projections 2008-2030 detailing % increase year on year

	Northern Ireland	Mid & East Antrim	Ballymena	Carrickfergus	Larne
2008	1,779,152	134,169	62,900	39,345	31,924
	+0.80%	+0.45%	+0.76%	-0.19%	+0.63%
2009	1,793,333	134,774	63,377	39,271	32,126
	+0.64%	+0.28%	+0.55%	-0.03%	+0.08%
2010	1,804,833	135,157	63,723	39,282	32,152
	+0.53%	+0.15%	+0.63%	-0.46%	-0.05%
2011	1,814,318	135,365	64,127	39,102	32,136
	+0.51%	+0.35%	+0.66%	-0.02%	+0.17%
2012	1,823,634	135,838	64,551	39,096	32,191
	+0.48%	+0.26%	+0.47%	-0.08%	+0.24%
2013	1,832,324	136,188	64,853	39,066	32,269
	+0.52%	+0.31%	+0.59%	-0.12%	+0.28%
2014	1,841,915	136,616	65,238	39,018	32,360
	+0.52%	+0.30%	+0.57%	-0.13%	+0.28%
2015	1,851,573	137,029	65,611	38,967	32,451
	+0.53%	+0.30%	+0.54%	-0.11%	+0.29%
2016	1,861,386	137,434	65,963	38,926	32,545
	+0.53%	+0.28%	+0.55%	-0.15%	+0.24%
2017	1,871,209	137,818	66,325	38,869	32,624
	+0.53%	+0.27%	+0.52%	-0.12%	+0.22%
2018	1,881,094	138,194	66,673	38,824	32,697
	+0.52%	+0.25%	+0.51%	-0.19%	+0.24%
2019	1,890,872	138,541	67,015	38,751	32,775
	+0.50%	+0.24%	+0.48%	-0.13%	+0.20%
2020	1,900,393	138,876	67,336	38,699	32,841
	+0.49%	+0.23%	+0.48%	-0.19%	+0.20%
2021	1,909,613	139,189	67,656	38,625	32,908
	+0.46%	+0.21%	+0.46%	-0.21%	+0.18%
2022	1,918,485	139,476	67,965	38,544	32,967
	+0.44%	+0.19%	+0.43%	-0.21%	+0.17%
2023	1,926,927	139,745	68,259	38,463	33,023
	+0.42%	+0.19%	+0.43%	-0.27%	+0.12%
2024	1,935,053	140,015	68,551	38,359	33,064
	+0.40%	+0.12%	+0.39%	-0.27%	+0.14%
2025	1,942,704	140,186	68,821	38,254	33,111
	+0.37%	+0.12%	+0.37%	-0.30%	+0.08%
2026	1,949,928	140,353	69,076	38,140	33,137
	+0.35%	+0.10%	+0.37%	-0.35%	+0.08%
2027	1,956,726	140,500	69,330	38,007	33,163
	+0.33%	+0.20%	+0.43%	-0.21%	+0.17%
2028*	1,963,101	140,776	69,630	37,927	33,219
	+0.30%	+0.20%	+0.43%	-0.21%	+0.17%
2029*	1,969,055	141,054	69,931	37,847	33,276
	+0.28%	+0.20%	+0.43%	-0.21%	+0.17%
2030*	1,974,611	141,334	70,234	37,768	33,332

Source: NISRA Northern Ireland Population Projections Data (2012 based) & Sub-Northern Ireland Population Projections (2012 based) Local Government District Population Totals.*The projections for LGDs for 2028-2030 were calculated using the percentage increase of 2026-2027 (Mid & East Antrim=0.20%, Ballymena=0.43%, Carrickfergus= -0.21%, Larne=0.17%)

Amended with 2012-based Table J3: Population Projections 2008-2030 detailing % increase year on year

	Northern Ireland	Mid & East Antrim	Ballymena	Carrickfergus	Larne
2008	1,779,152	134,169	62,900	39,345	31,924
	+0.80%	+0.45%	+0.76%	-0.19%	+0.63%
2009	1,793,333	134,774	63,377	39,271	32,126
	+0.64%	+0.28%	+0.55%	-0.03%	+0.08%
2010	1,804,833	135,157	63,723	39,282	32,152
	+0.53%	+0.15%	+0.63%	-0.46%	-0.05%
2011	1,814,318	135,365	64,127	39,102	32,136
	+0.51%	+0.35%	+0.66%	-0.02%	+0.17%
2012	1,823,634	135,838	64,551	39,096	32,191
	+0.48%	+0.26%	+0.47%	-0.08%	+0.24%
2013	1,832,324	136,188	64,853	39,066	32,269
	+0.52%	+0.31%	+0.59%	-0.12%	+0.28%
2014	1,841,915	136,616	65,238	39,018	32,360
	+0.52%	+0.30%	+0.57%	-0.13%	+0.28%
2015	1,851,573	137,029	65,611	38,967	32,451
	+0.53%	+0.30%	+0.54%	-0.11%	+0.29%
2016	1,861,386	137,434	65,963	38,926	32,545
	+0.53%	+0.28%	+0.55%	-0.15%	+0.24%
2017	1,871,209	137,818	66,325	38,869	32,624
	+0.53%	+0.27%	+0.52%	-0.12%	+0.22%
2018	1,881,094	138,194	66,673	38,824	32,697
	+0.52%	+0.25%	+0.51%	-0.19%	+0.24%
2019	1,890,872	138,541	67,015	38,751	32,775
	+0.50%	+0.24%	+0.48%	-0.13%	+0.20%
2020	1,900,393	138,876	67,336	38,699	32,841
	+0.49%	+0.23%	+0.48%	-0.19%	+0.20%
2021	1,909,613	139,189	67,656	38,625	32,908
	+0.46%	+0.21%	+0.46%	-0.21%	+0.18%
2022	1,918,485	139,476	67,965	38,544	32,967
	+0.44%	+0.19%	+0.43%	-0.21%	+0.17%
2023	1,926,927	139,745	68,259	38,463	33,023
	+0.42%	+0.19%	+0.43%	-0.27%	+0.12%
2024	1,935,053	140,015	68,551	38,359	33,064
	+0.40%	+0.12%	+0.39%	-0.27%	+0.14%
2025	1,942,704	140,186	68,821	38,254	33,111
	+0.37%	+0.12%	+0.37%	-0.30%	+0.08%
2026	1,949,928	140,353	69,076	38,140	33,137
	+0.35%	+0.10%	+0.37%	-0.35%	+0.08%
2027	1,956,726	140,500	69,330	38,007	33,163
	+0.33%	+0.20%	+0.43%	-0.21%	+0.17%
2028*	1,963,101	140,776	69,630	37,927	33,219
	+0.30%	+0.20%	+0.43%	-0.21%	+0.17%
2029*	1,969,055	141,054	69,931	37,847	33,276
	+0.28%	+0.20%	+0.43%	-0.21%	+0.17%
2030*	1,974,611	141,334	70,234	37,768	33,332

Source: NISRA Northern Ireland Population Projections Data (2012 based) & **Sub-Northern Ireland Population Projections (2012 based) Local Government District Population Totals.** *The projections for LGDs for 2028-2030 were calculated using the percentage increase of 2026-2027 (Mid & East Antrim=0.20%, Ballymena=0.43%, Carrickfergus= -0.21%, Larne=0.17%)

APPENDIX K Housing Completions

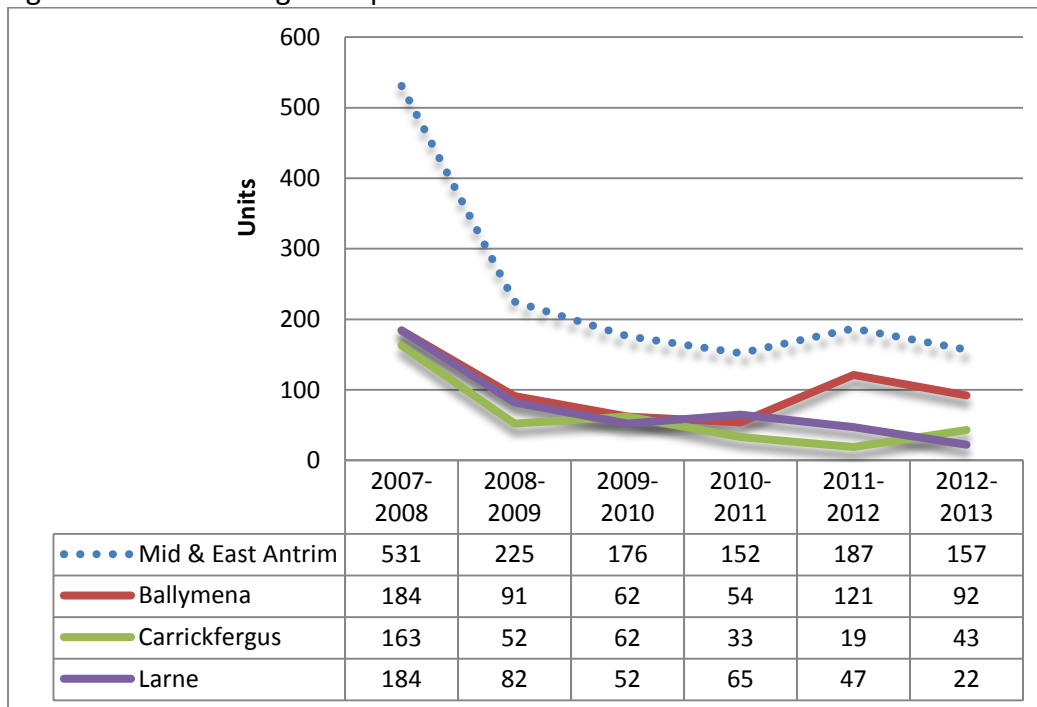
Table K1: Total Dwellings Completed in Mid & East Antrim- 2007-2013

	2007-2008	2008-2009	2009-2010	2010-2011	2011-2012	2012-2013
Mid & East Antrim	531	225	176	152	187	157
Ballymena	184	91	62	54	121	92
Carrickfergus	163	52	62	33	19	43
Larne	184	82	52	65	47	22

Note: Totals include only dwellings completed within settlements defined in prevailing development plans within Ballymena, Carrickfergus & Larne Districts and excludes dwellings in the open countryside

Source: DOE NI Housing Land Availability Summary Reports 2008, 2009, 2010, 2011, 2012 & 2013

Fig. K1: Total Dwellings Completed in Mid & East Antrim- 2007-2013



Note: Totals include only dwellings completed within settlements defined in prevailing development plans within Ballymena, Carrickfergus & Larne Districts and excludes dwellings in the open countryside

Source: DOE NI Housing Land Availability Summary Reports 2008,2009,2010,2011,2012 & 2013

Table K2: Housing Monitor Report 2013 - Ballymena District Summary of Completions in the RDS Period (1st Jan 1999- 31st July 2013)

SETTLEMENT	*1/1/1999 - 31/7/2008	2008 - 2009	2009 - 2010	2010 - 2011	2011 - 2012	2012 - 2013	Total 1/1/1999 - 31/7/2013
MAIN TOWN							
Ballymena	1,448	52	29	28	39	58	1,654
VILLAGES							
Ahoghill	334	6	6	3	7	8	364
Broughshane	337	7	9	11	51	4	419
Cargan	105	0	1	0	0	0	106
Clough	53	0	0	0	0	0	53
Cullybackey	145	1	0	0	0	0	146
Kells/Connor	103	4	10	5	4	9	135
Portglenone	89	5	6	4	18	1	123
SMALL SETTLEMENTS							
Grange Corner	94	15	0	0	0	7	116
Martinstown	31	1	1	3	2	5	43
Total in Settlements	2,739	91	62	54	121	92	3,159
Open Countryside	**930	208	115	61	90	76	4,664
Ballymena District Total	3,669	299	177	115	211	168	7,823

Note:

*1999 figure is for Jan-July (seven months) so it is seven-twelfths of the annual figure.

**As only a cumulative figure for 1/1/98 to 2003 was known (443 units) to find figure from 1/1/99 the average over the 5 years 98-2003 was taken away from 443 to give a total of 354 units from 1/1/99-2003.

Source: Open Countryside figures from 1/1/1999-2009 from Ballymena Divisional Office Rural Housing Survey, from 2010-2011 onwards figures provided from LPS.

Table K3: Housing Monitor Report 2013 – Larne District Summary of Completions in the RDS Period (1st Jan 1999- 31st July 2013)

SETTLEMENT	*1/1/1999 - 31/7/2008	2008 - 2009	2009 - 2010	2010 - 2011	2011 - 2012	2012 - 2013	Total 1/1/1999 - 31/7/2013
MAIN TOWN							
Larne	1,382	75	30	39	43	14	1,583
VILLAGES							
Ballycarry	218	4	4	9	4	2	241
Ballygalley	53	0	1	0	0	0	54
Ballystrudder	110	0	1	2	0	1	114
Carnlough	127	0	0	12	0	1	140
Glenarm	32	0	4	0	0	0	36
Glynn	17	1	0	0	0	0	18
SMALL SETTLEMENTS							
Browns Bay	0	0	0	0	0	0	0
Carnalbanagh	0	0	0	0	0	0	0
Carnageer	5	0	0	0	0	0	5
Carncastle	13	0	0	0	0	0	13
Crosshill	9	0	0	0	0	0	9
Deerpark	0	0	0	0	0	0	0
Drumcrow	0	0	0	0	0	1	1
Ferris Bay	0	0	0	0	0	0	0
Feystown	1	0	0	0	0	0	1
Garron Point	0	0	0	0	0	0	0
Glenoe	12	0	0	0	0	0	12
Kilwaughter	2	0	0	0	0	0	2
Magheramorene	56	1	0	0	0	2	59
Millbay	4	0	0	0	0	0	4
Mounthill	29	1	0	0	0	0	30
Mullaghboy	24	0	12	3	0	1	40
Raloo	5	0	0	0	0	0	5
Straidkilly	0	0	0	0	0	0	0
Total in Settlements	2,099	82	52	65	47	22	2,367
Open Countryside	**141	23	29	14	18	12	237
Larne District Total	2,240	105	81	79	65	34	2,604

Note:

*1999 figure is for Jan-July (seven months) so it is seven-twelfths of the annual figure.

**As only a cumulative figure for 1/1/98 to 2003 was known (93 units) to find figure from 1/1/99 the average over the 5 years 98-2003 was taken away from 93 to give a total of 74 units from 1/1/99-2003

Open Countryside figures from 1/1/1999-2009 from Ballymena Divisional Office Rural Housing Survey, from 2010-2011 onwards figures provided from LPS.

Table K4: Housing Monitor Report 2013 – Carrickfergus District Summary of Completions in the RDS Period (1st Jan 1999- 31st July 2013)

SETTLEMENT	*1/1/1999 - 31/7/2008	2008 - 2009	2009 - 2010	2010 - 2011	2011 - 2012	2012 - 2013	Total 1/1/1999 - 31/7/2013
MAIN TOWN							
Carrickfergus	1,699	43	44	24	13	27	1,850
LOCAL TOWNS							
Greenisland	386	7	11	4	5	16	429
Whitehead	223	3	16	0	0	0	242
SMALL SETTLEMENTS							
Knocknaguilliagh	2	0	0	0	1	0	5
Tropperslane	2	0	0	0	0	0	0
Total in Settlements	2,312	53	71	28	19	43	2,526
Open Countryside	Unknown	Unknown	Unknown	2	3	4	Unknown
Carrickfergus District Total	2,312+	53+	71+	30	22	47	2,535+

Note: *1999 figure is for Jan-July (seven months) so it is seven-twelfths of the annual figure.
No rural figure known for 1999-2010

APPENDIX L **Bibliography**

DOE (1989) *Ballymena Area Plan 1986-2001*

DOE - Planning Service (1998) [Larne Area Plan 2010](#)

DOE - Planning Service (1998) [Planning Policy Statement 1: General Principles](#)

DOE - Planning Service (2000) [Carrickfergus Area Plan 2001](#)

DOE – Planning Service & DRD Roads Service [Creating Places - Achieving Quality in Residential Development](#) (2000)

DOE - Planning Service (2001) [Planning Policy Statement 7: Quality Residential Environments](#)

DOE – Planning Service (2002) [Development Advice Control Note 8 \(DCAN 8\) Housing in Existing Urban Areas](#)

DOE - Planning Service (2004) [Planning Policy Statement 8: Open Space, Sport and Outdoor Recreation](#)

DOE (2010) [Planning Policy Statement 21: Sustainable Development in the Countryside](#)

DOE - Planning Service (2014) [Belfast Metropolitan Area Plan 2015 \(BMAP\)](#)

DOE (2014) [Strategic Planning Policy Statement for Northern Ireland \(draft\)](#)

DOE (2014) [Planning Policy Statement 22: Affordable housing \(draft\)](#)

DOE (2014) [Living Places: An Urban Stewardship and Design Guide Living Places: An Urban Stewardship and Design Guide for NI](#)

DRD (2005) [Planning Policy Statement 12: Housing in Settlements](#)

DRD (2012) [Regional Development Strategy \(RDS\) 2035](#)

Housing Executive (2001) [Northern Ireland House Condition Survey 2001](#)

Housing Executive (2011) [Northern Ireland House Condition Survey 2011](#)

Housing Executive (2014) [Northern Ireland Housing Market Review & Perspective 2014-2017](#)

Housing Executive (2014) [Ballymena District Housing Plan & Local Housing Strategy 2014/2015](#)

Housing Executive (2014) [Carrickfergus District Housing Plan & Local Housing Strategy 2014/2015](#)

Housing Executive (2014) [Larne District Housing Plan & Local Housing Strategy 2014/2015](#)

